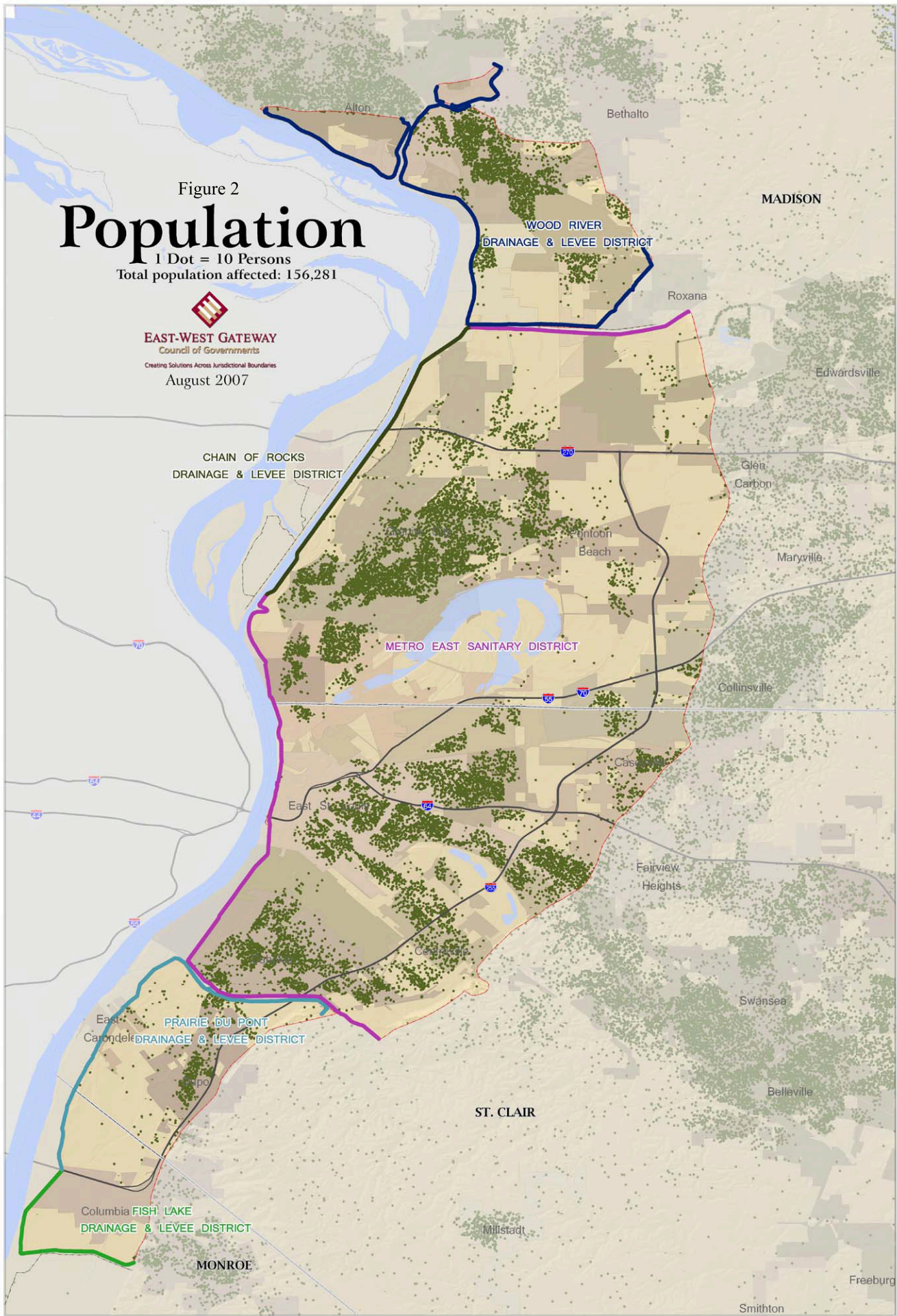


Figure 2
Population
 1 Dot = 10 Persons
 Total population affected: 156,281


EAST-WEST GATEWAY
 Council of Governments
 Creating Solutions Across Jurisdictional Boundaries
 August 2007



Legend

- | | | | |
|--|---|---|--|
|  Chain of Rocks Levee |  Prairie Du Pont Levee |  Water Features |  Levee Protected Area |
|  Fish Lake Levee |  Wood River Levees |  County Boundary |  Interstate Highways |
|  Metro East Sanitary District Levee |  Levees | | |

