

# Progress Report November 16, 2011 SW IL Levee System By Jay Martin



## Update on Activities

---



- Design Activities
- 404/401 Permits
- Schedule and Risks

- Design and Construction Documents – On Track
  - Berms
  - Cut off walls
  - Interior drainage
    - Pump stations
    - Ditching
  - Seepage blankets/toe drains
  - Wetlands mitigation
  - Utility relocations
  - Temporary construction access roads
  - Limits of disturbance
  - Existing roadway relocation

- 404 – Draft in QC review
- 401 – Draft in QC review
  
- Discussions continue with both the USACE and IEPA to tailor each application.

# Schedule



Task	Start	End	2012				2013				2014				2015			
			QTR 4	QTR 1	QTR 2	QTR 3	QTR 4	QTR 1	QTR 2	QTR 3	QTR 4	QTR 1	QTR 2	QTR 3	QTR 4	QTR 1	QTR 2	QTR 3
<b>Work Package 1</b>	12/16/2011	11/1/2013	[Gantt bar spanning from QTR 4 2011 to QTR 4 2013]															
404/401 Permit	12/16/2011	3/24/2012	[Blue bar from QTR 4 2011 to QTR 1 2012]															
USACE Technical Review	12/16/2011	1/14/2012	[Blue bar from QTR 4 2011 to QTR 1 2012]															
100% Construction Doc Prep	12/16/2011	1/21/2012	[Blue bar from QTR 4 2011 to QTR 1 2012]															
USACE 408 Final Review & Permission	1/22/2012	2/20/2012	[Blue bar from QTR 1 2012 to QTR 1 2012]															
Local Permit Review	1/22/2012	2/20/2012	[Blue bar from QTR 1 2012 to QTR 1 2012]															
Bid	1/22/2012	3/5/2012	[Blue bar from QTR 1 2012 to QTR 1 2012]															
Addenda	2/21/2012	3/5/2012	[Blue bar from QTR 1 2012 to QTR 1 2012]															
Bid Review/Recommendation	3/6/2012	3/12/2012	[Blue bar from QTR 1 2012 to QTR 1 2012]															
County Board Approval	3/13/2012	4/11/2012	[Blue bar from QTR 1 2012 to QTR 1 2012]															
Council Authorization	3/13/2012	4/11/2012	[Blue bar from QTR 1 2012 to QTR 1 2012]															
Contracting (Award & Notice to Proceed)	4/12/2012	5/11/2012	[Blue bar from QTR 1 2012 to QTR 1 2012]															
Construction	5/12/2012	11/1/2013	[Blue bar from QTR 2 2012 to QTR 4 2013]															
<b>Work Package 2</b>	12/16/2011	1/24/2014	[Gantt bar spanning from QTR 4 2011 to QTR 4 2013]															
USACE Technical Review	12/16/2011	1/14/2012	[Red bar from QTR 4 2011 to QTR 1 2012]															
80% Construction Doc Prep	1/16/2012	2/29/2012	[Red bar from QTR 1 2012 to QTR 1 2012]															
Land Acquisition	3/1/2012	5/29/2012	[Red bar from QTR 1 2012 to QTR 2 2012]															
100% Construction Doc Prep	3/1/2012	4/14/2012	[Red bar from QTR 1 2012 to QTR 1 2012]															
USACE 408 Final Review & Permission	4/15/2012	5/14/2012	[Red bar from QTR 1 2012 to QTR 1 2012]															
Local Permit Review	4/15/2012	5/14/2012	[Red bar from QTR 1 2012 to QTR 1 2012]															
Bid	4/15/2012	5/28/2012	[Red bar from QTR 1 2012 to QTR 1 2012]															
Addenda	5/15/2012	5/28/2012	[Red bar from QTR 1 2012 to QTR 1 2012]															
Bid Review/Recommendation	5/29/2012	6/4/2012	[Red bar from QTR 1 2012 to QTR 1 2012]															
County Board Approval	6/5/2012	7/4/2012	[Red bar from QTR 1 2012 to QTR 1 2012]															
Council Authorization	6/5/2012	7/4/2012	[Red bar from QTR 1 2012 to QTR 1 2012]															
Contracting (Award & Notice to Proceed)	7/5/2012	8/3/2012	[Red bar from QTR 1 2012 to QTR 1 2012]															
Construction	8/4/2012	1/24/2014	[Red bar from QTR 2 2012 to QTR 4 2013]															
<b>Work Package 3</b>	12/16/2011	2/1/2014	[Gantt bar spanning from QTR 4 2011 to QTR 4 2013]															
USACE Technical Review	12/16/2011	1/14/2012	[Green bar from QTR 4 2011 to QTR 1 2012]															
Construction Documents	3/9/2012	4/22/2012	[Green bar from QTR 1 2012 to QTR 1 2012]															
Land Acquisition	4/1/2012	6/29/2012	[Green bar from QTR 1 2012 to QTR 2 2012]															
USACE 408 Final Review & Permission	4/23/2012	5/22/2012	[Green bar from QTR 1 2012 to QTR 1 2012]															
Local Permit Review	4/23/2012	5/22/2012	[Green bar from QTR 1 2012 to QTR 1 2012]															
Construction	8/12/2012	2/1/2014	[Green bar from QTR 2 2012 to QTR 4 2013]															
<b>Work Package 4</b>	12/16/2011	3/27/2014	[Gantt bar spanning from QTR 4 2011 to QTR 4 2013]															
USACE Technical Review	12/16/2011	1/14/2012	[Yellow bar from QTR 4 2011 to QTR 1 2012]															

# Schedule

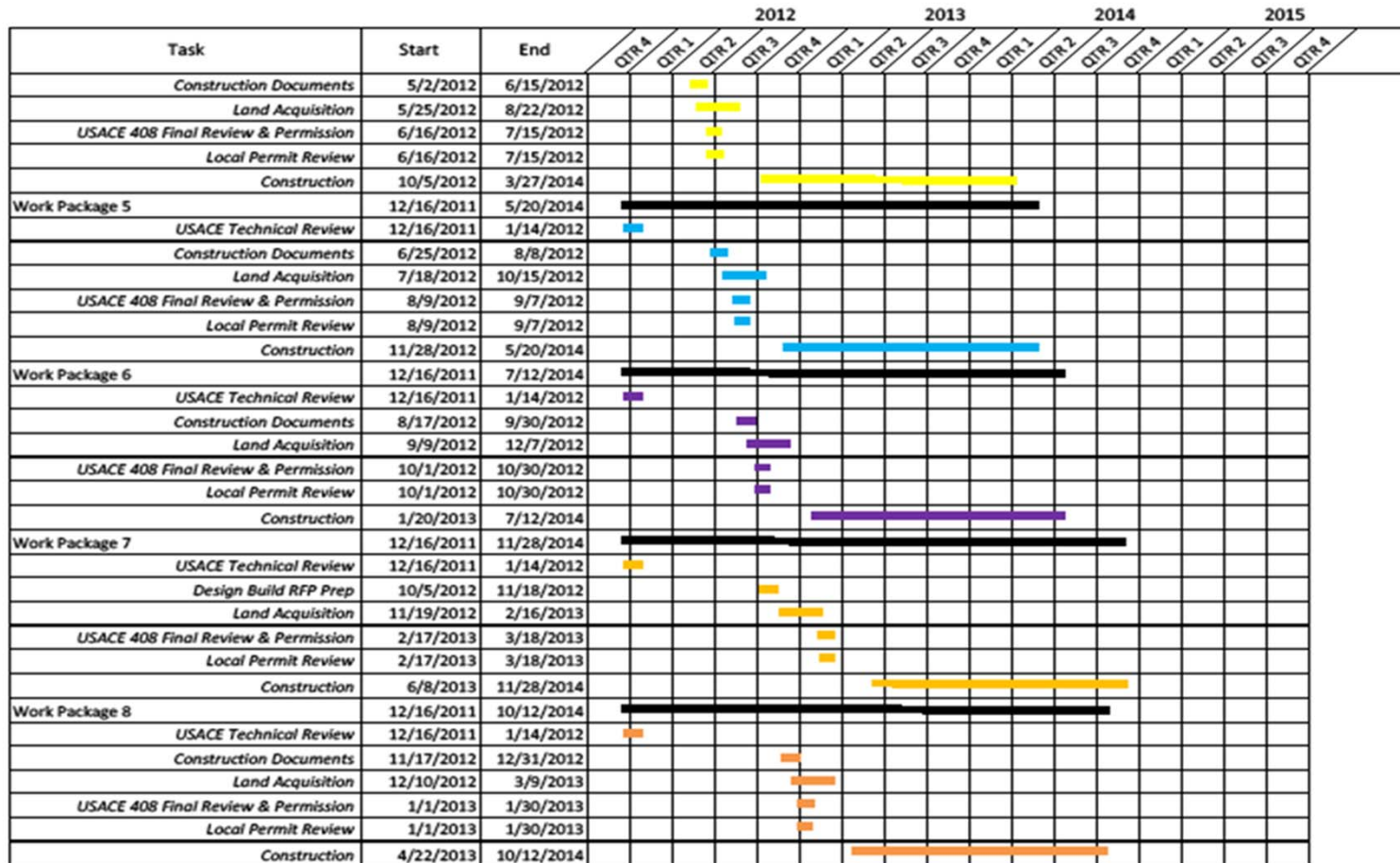


Figure x  
Project Schedule

# Schedule



Task	Start	End	2012				2013				2014				2015			
			QTR 4	QTR 1	QTR 2	QTR 3	QTR 4	QTR 1	QTR 2	QTR 3	QTR 4	QTR 1	QTR 2	QTR 3	QTR 4	QTR 1	QTR 2	QTR 3
<b>Work Package 1</b>	12/16/2011	11/1/2013																
404/401 Permit	12/16/2011	3/24/2012																
USACE Technical Review	12/16/2011	1/14/2012																
100% Construction Doc Prep	12/16/2011	1/21/2012																
USACE 408 Final Review & Permission	1/22/2012	2/20/2012																
Local Permit Review	1/22/2012	2/20/2012																
Bid	1/22/2012	3/5/2012																
Addenda	2/21/2012	3/5/2012																
Bid Review/Recommendation	3/6/2012	3/12/2012																
County Board Approval	3/13/2012	4/11/2012																
Council Authorization	3/13/2012	4/11/2012																
Contracting (Award & Notice to Proceed)	4/12/2012	5/11/2012																
Construction	5/12/2012	11/1/2013																

- WP-1 - Gravity Drain Rehab & Gravel Filter Rehab (WR & MESD)
- WP-2 - Pump Stations (WR, MESD & PdP/FL)
- WP-3 - Relief Wells, Berm, Graded Filter & Toe Drain (WR)
- WP-4 - Clay Blanket, Graded Filter & Toe Drain (MESD)
- WP-5 - Relief Wells, Clay Blanket, Graded Filter & Toe Drain (MESD)
- WP-6 - Relief Wells & Berm (PdP/FL)
- WP-7 - Cutoff Walls (WR)
- WP-8 - Wetland Mitigation (offsite)



- 408 Process with the USACE
  - 1.) Recent meetings
    - Berms/RW/Clay caps – Last Wednesday
    - Cut off walls/Graded filters - Yesterday
    - Structural/H&H – This afternoon
  - 2.) Technical Review – calculations with 60%
  - 3.) Official submittal - Technical, plus other elements submitted at 100% (District doesn't have final say). Additional technical reviews maybe dictated by USACE
  
- 404, 401 Permitting
  - Dependent on Corps and IL review time
  - Public hearings?
  
- Mel Price and Chain of Rocks – FEMA certification

Questions?

