

# Progress Report August 17, 2011 SW IL Levee System By Jay Martin



## Update on Activities

- Wetlands focus
  - Status
  - Short term activities
  - Strategy for compensation



## Background



- Section 404 Permit. This permit is obtained from the U.S. Army Corps of Engineers (USACE) for the discharge of dredge or fill material into waters of the United States, including wetlands.
  
- Two paths
  - Nationwide Permit <0.5 acres of wetland impact (no public review)
  - Individual Permit for more than 0.5 acre of wetland impact.
  
- Ultimately it requires mitigation
  - Build new wetlands to compensate for the area being filled. May not be at a one to one ratio.

3

## Process for Surveying Wetlands



- Actual field review by scientists knowledgeable in wetland characteristics.
  
- Physical mapping of the potential areas noting types of soil, type of vegetation, evidence of water (hydrology).
  
- Produce plans showing the limits of the wetland area (delineation).
  
- Need to be confirmed (agreed to) by the Corps technical staff.
  
- Based on the type of wetland the Corps will decide a mitigation ratio.

4

## Field Effort



5

## Status



- Wetland field delineations have been completed.
- Currently processing data and producing Wetland Delineation Reports for each of the three levee systems.
- There will be wetland impacts that will have to be mitigated.
- Preliminary quantities are below original estimate.
- The majority of wetlands will likely have to be mitigated at a 1:1 ratio, but forested wetlands may require 2:1 or 3:1 ratios.

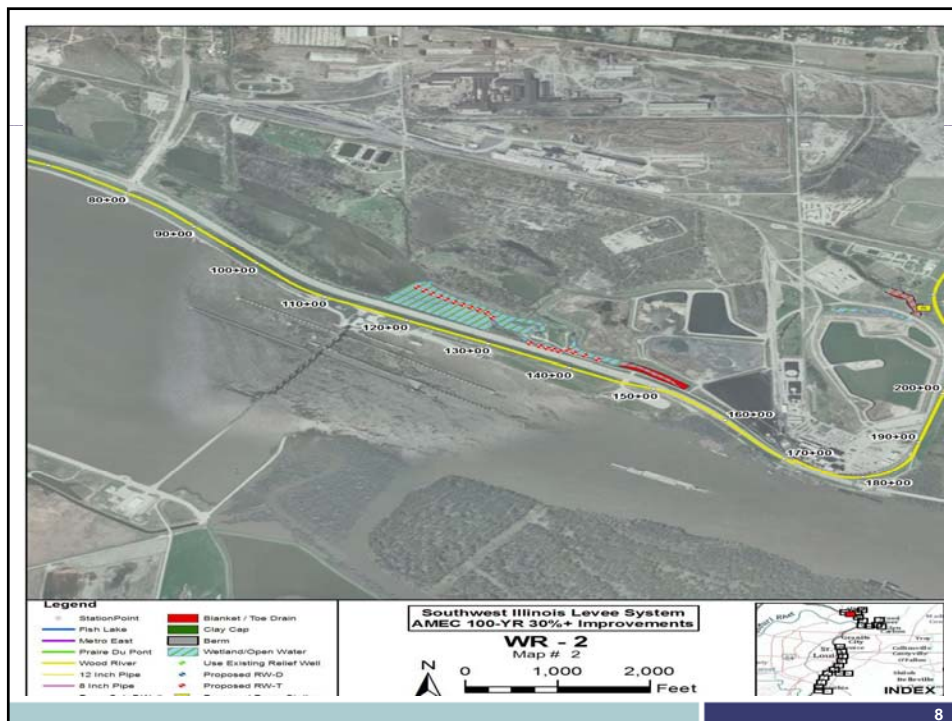
6

## Short Term

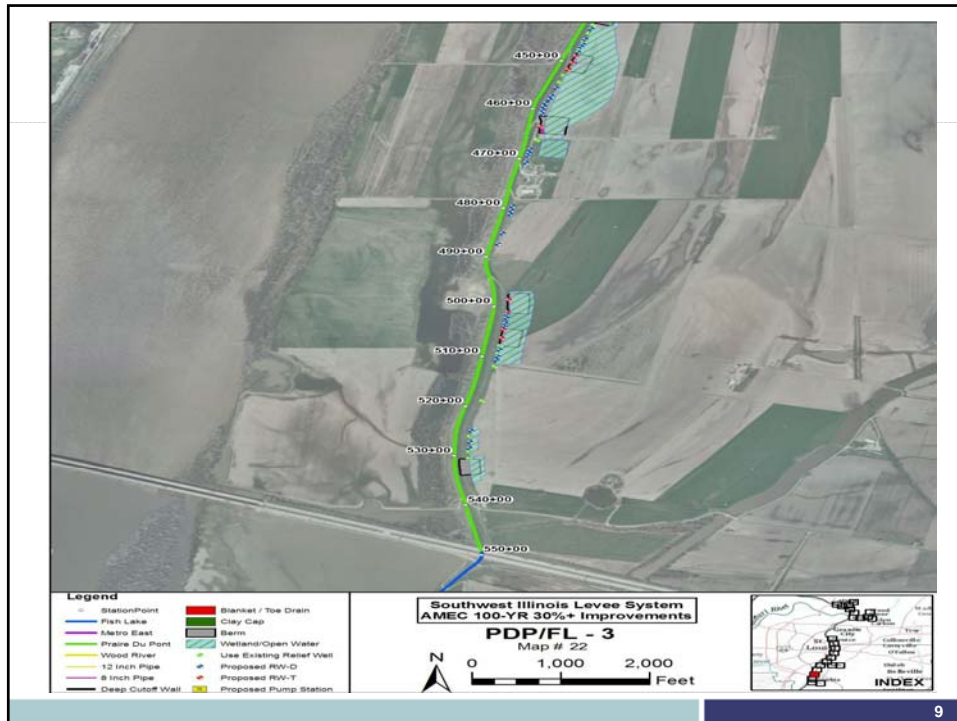


- AMEC evaluating wetland impacts resulting from 100-year design vs. USACE design. Are impacts the same?
- AMEC meeting with the USACE today (August 17) to discuss overlap of impacts for two projects;
  - mitigation that the USACE has already designed; and
  - areas in which the Council and the USACE can work together to mitigate for the impacts that fall within both footprints.

7



8



## Options and Decisions for Mitigation



- Acquire the rights ...buy credits from a wetland bank that has been developed by others.
- Purchase suitable property and fund the development of new wetlands. This could be owned by the Council, Levee District or County.
- Enter into an agreement with a property owner where they retain ownership and the Council funds the development of the wetland (including monitoring).

## Strategy



- No wetland banks are available for this area.
- Identify area(s) to be used for mitigation –
  - A willing individual/entity to maintain ownership following completing of the mitigation and monitoring period.
  - Suitable characteristics for wetland development
- Work with the counties and other public entities to determine if they have any property were a wetland could be an attribute.
- Consider properties that the USACE has already identified as potential mitigation sites.



11

## Strategy continued



- Design Mitigation –
  - AMEC to design mitigation plan for proposed wetland mitigation.
  - Conceptual design will be part of initial permit applications.
  - Final design will follow review of conceptual design from permitting agencies.
- Construct Mitigation Area –
  - This will be a condition of the permit; however, construction of mitigation area generally does not have to occur prior to permitted impacts.
- Mitigation area will have to be monitored and maintained -
  - Permit will have required survival rates for vegetation, etc. as part of the permit conditions.
  - Wetland mitigation sites generally will require 5-10 years of monitoring.
  - Mitigation areas generally required a deed restriction or similar instrument to prevent future development.

12

# QUESTIONS?

