

Progress Report July 20, 2011 SW IL Levee System By Jay Martin



Update on Activities



- Design Activities
- Field Activities
- Permitting
- Risks
- Look Ahead/Overall Schedule

- Natural Resources
- Cultural Resources
- Land Survey
- Continued Underseepage Analysis
- Cut off wall solutions
- Seepage Berms/Clay Caps/Fill Solutions
- Relief Well Solutions (new & rehabilitated)
- General Civil Improvements (pump stations & gravity drains)
- Stakeholder Coordination

Design Activities



- Continue to work through VE list within each system
- Met with the USACE on cut-off walls and filter drains
- Supporting the Council on Project Implementation Plan
- Identified preliminary bid packages
- Design brief on filter blankets/drains

Field Activities



- RW testing continues
- Wetlands delineation
- SOW for survey support

Permitting



- We have a plan and schedule
- Met twice with the IEPA – 401
- Work plan for cultural
- Coordination with USFWS

Schedule	Jun 2011	Jul 2011	Aug 2011	Sep 2011	Oct 2011	Nov 2011	Dec 2011	Jan 2012	Feb 2012	Mar 2011
Initial Meetings										
Ecological Reconnaissance, Wetland Delineations, and Reporting										
Coordination with USFWS/IDNR										
Pre-application meetings										
Wetland Mitigation Site Selection and Design/Mitigation Plan										
Joint Permit Application Preparation and Submittal*										
USACE review & approval										
IEPA review & approval										
Permitting Complete										

Major Risks



- High water levels
- Weather
- Permits (404, 401, 408)
- Funding

Look Ahead/Schedule



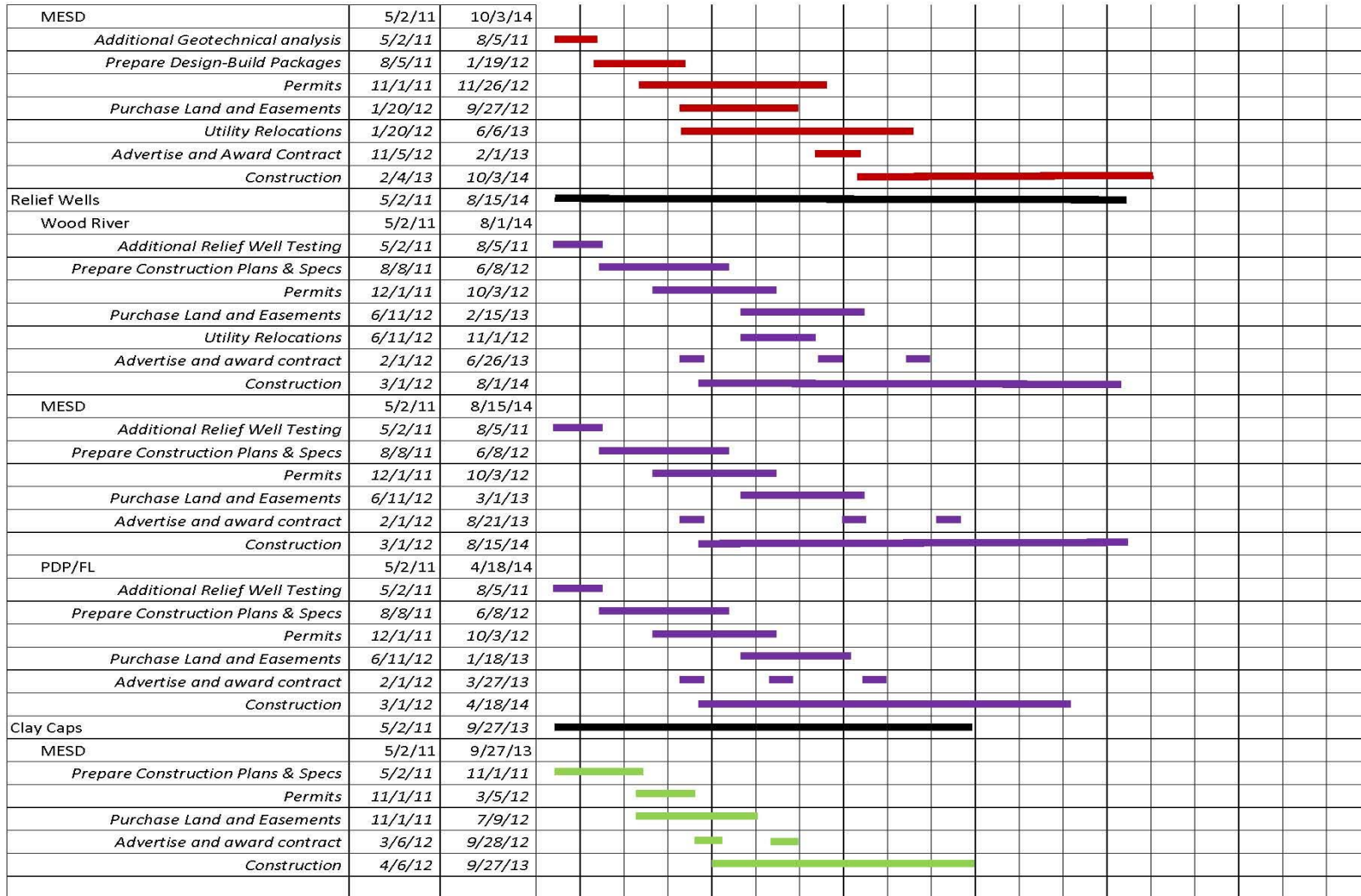
- Will begin screening design against impacts
- NTP on surveying
- USACE meetings for design reviews / comparisons
- Wetlands mitigation design

Schedule



Task	Start	End	2011				2012				2013				2014				2015			
			QTR 2	QTR 3	QTR 4	QTR 1	QTR 2	QTR 3	QTR 4	QTR 1	QTR 2	QTR 3	QTR 4	QTR 1	QTR 2	QTR 3	QTR 4	QTR 1	QTR 2	QTR 3	QTR 4	
Seepage Berms	5/2/11	4/17/15	[Solid black bar]																			
Wood River	5/2/11	4/17/15	[Solid black bar]																			
Additional Geotechnical analysis	5/2/11	8/5/11	[Blue bar]																			
Prepare Const. Plans & Specs	8/5/11	8/23/12	[Blue bar]																			
Permits	7/23/12	9/13/13	[Blue bar]																			
Purchase Land and Easements	8/23/12	9/4/13	[Blue bar]																			
Utility Relocations	8/23/12	12/31/13	[Blue bar]																			
Advertise and award contract	9/16/13	12/6/13	[Blue bar]																			
Construction	12/9/13	4/17/15	[Blue bar]																			
MESD	5/2/11	3/20/15	[Blue bar]																			
Additional Geotechnical analysis	5/2/11	8/5/11	[Blue bar]																			
Prepare Const. Plans & Specs	8/5/11	8/23/12	[Blue bar]																			
Permits	7/23/12	9/13/13	[Blue bar]																			
Purchase Land and Easements	8/23/12	9/4/13	[Blue bar]																			
Utility Relocations	8/23/12	12/31/13	[Blue bar]																			
Advertise and award contract	9/16/13	12/6/13	[Blue bar]																			
Construction	12/9/13	3/20/15	[Blue bar]																			
PDP/FL	5/2/11	12/5/14	[Blue bar]																			
Additional Geotechnical analysis	5/2/11	8/5/11	[Blue bar]																			
Prepare Const. Plans & Specs	8/5/11	2/1/12	[Blue bar]																			
Permits	1/2/12	2/22/13	[Blue bar]																			
Purchase Land and Easements	2/2/12	2/1/13	[Blue bar]																			
Utility Relocations	2/2/12	12/31/12	[Blue bar]																			
Advertise and award contract	2/25/13	5/17/13	[Blue bar]																			
Construction	5/20/13	12/5/14	[Blue bar]																			
Cutoff Walls	5/2/11	12/12/14	[Solid black bar]																			
Wood River	5/2/11	12/12/14	[Solid black bar]																			
Additional Geotechnical analysis	5/2/11	8/5/11	[Red bar]																			
Prepare Design-Build Packages	8/5/11	1/19/12	[Red bar]																			
Permits	11/1/11	11/26/12	[Red bar]																			
Purchase Land and Easements	1/20/12	9/27/12	[Red bar]																			
Utility Relocations	1/20/12	6/6/13	[Red bar]																			
Advertise and Award Contract	11/5/12	2/1/13	[Red bar]																			
Construction	2/4/13	12/12/14	[Red bar]																			

Schedule...



Schedule...

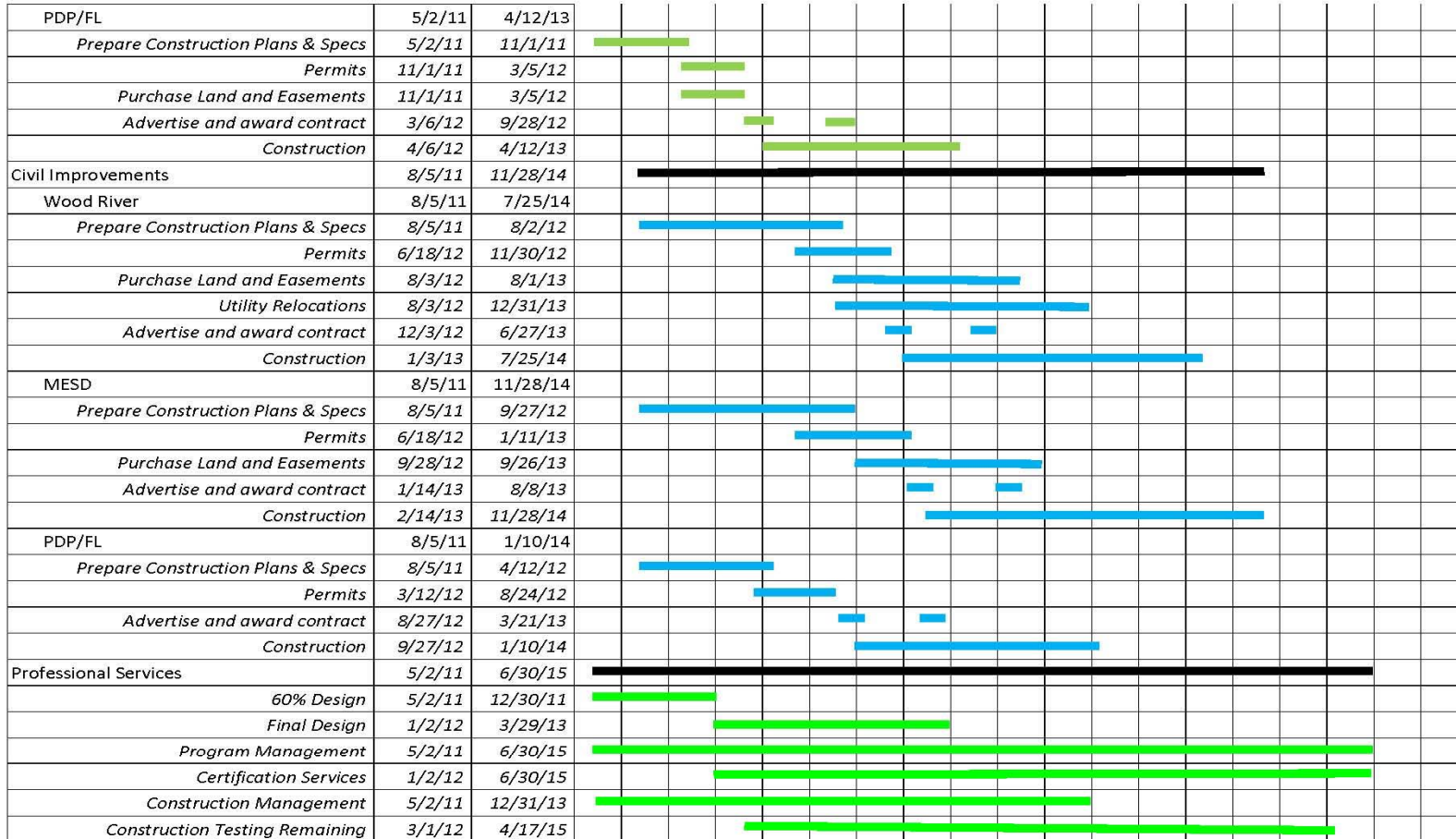


Figure x
Scenario 2 - Draft Project Schedule

Questions?

